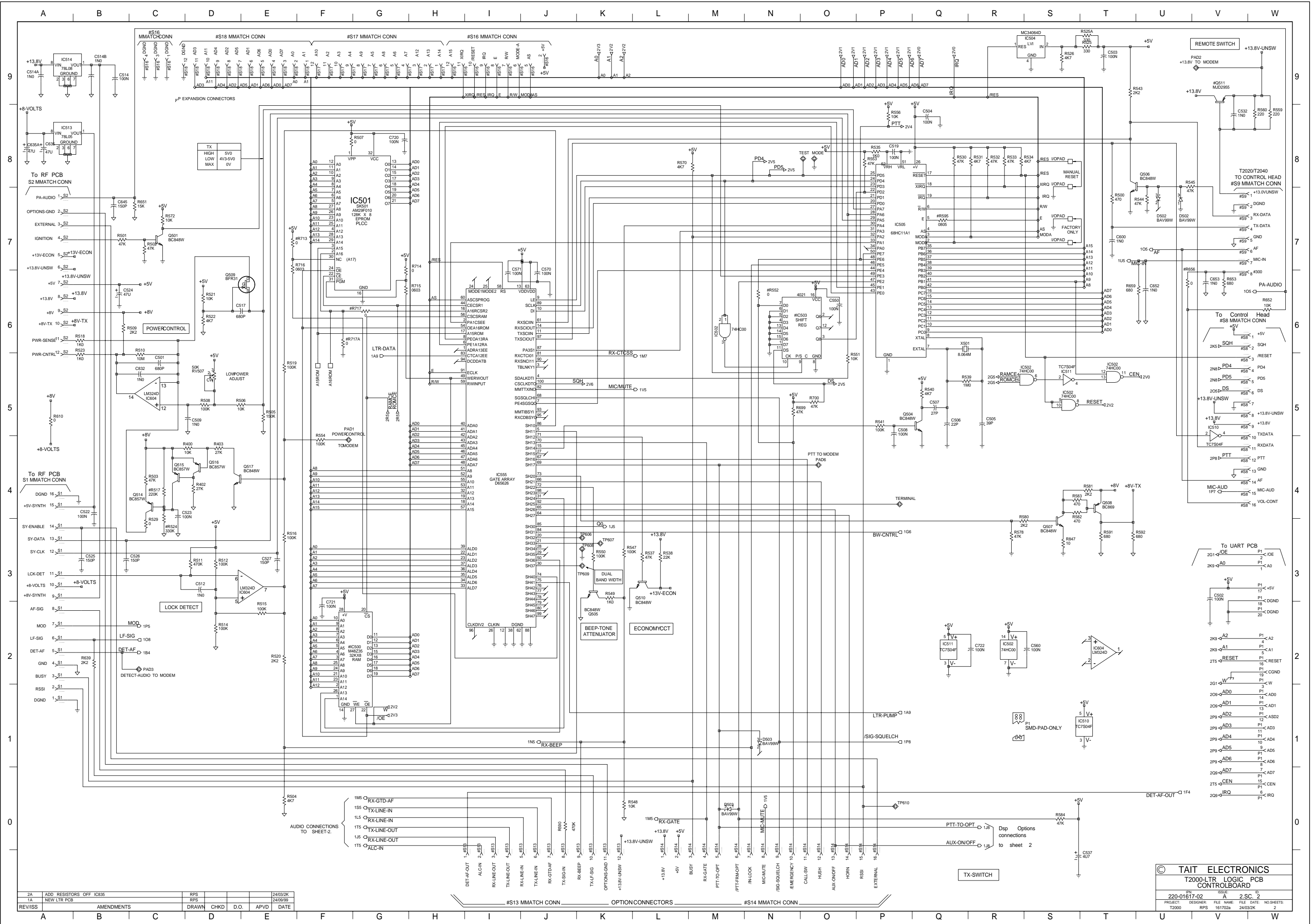


#	RAM										STADARD OR FFSK PRE-EMP										MICROPHONE										CONTROLHEAD										TRUNKED OR CONVENTIONAL OR LTR										CONNECTORS FOR A DATA RADIO										VARIANT INDICATORS									
	#OPTION	#IC500	#R713	#RV508	#R596	#R597	#C810	#C812	#R571	#RV599	#C704	#C703	#R700	#R552	#IC503	#S8	#S9	#R656	#Q511	#C706	#C631	#IC517	#R717	#R717A	#P1	#S13	#S14	#S16	#S17	#S18	#T3K44	#T3K45	#012	#014	#015	#016	#017	#018	#019	#F01	#F02	#F03																												
T2050	012	M48Z35MH1TR	-	-	39KS	10KJ	-	10NJ	220KJ	50KVAR13	4U7F16Z3528	-	-	0J	-	SK6MSMD	0J	MJD2955	-	100NT	FX469LS	0J	-	200UART	-	-	-	-	-	-	-	3K44OPT	3000OPT	680J	-	-	-	-	-	-	-	-	-	-	-	-	-	-	-	-																				
T203X	014	M48Z58	-	-	39KS	10KJ	-	10NJ	220KJ	50KVAR13	4U7F16Z3528	-	-	4021BD	SK16MSMD	-	-	-	-	100NT	FX469LS	0J	-	200UART	-	-	-	-	-	-	-	3K44OPT	3000OPT	-	2K2J	-	-	-	-	-	-	-	-	-	-	-	-	-	-	-																				
T2020	015	M48Z58	-	-	39KS	10KJ	-	-	0J	-	4U7F16Z3528	-	-	0J	-	SK6MSMD	0J	MJD2955	-	100NT	FX469LS	0J	-	200UART	-	-	-	-	-	-	-	3K44OPT	3000OPT	-	-	4K7J	-	-	-	-	-	-	-	-	-	-	-	-	-	-	-																			
T2040	016	M48Z58	-	-	39KS	10KJ	-	10NJ	220KJ	50KVAR13	4U7F16Z3528	-	-	0J	-	SK6MSMD	0J	MJD2955	-	100NT	FX469LS	0J	-	200UART	-	-	-	-	-	-	-	3K44OPT	3000OPT	-	-	-	6K9J	-	-	-	-	-	-	-	-	-	-	-	-	-	-																			
T2060	017	M48Z58	-	-	39KS	10KJ	-	-	0J	-	4U7F16Z3528	-	-	0J	-	SK6MSMD	0J	MJD2955	-	100NT	FX469LS	0J	-	200UART	-	-	-	-	-	-	-	3K44OPT	3000OPT	-	-	-	-	-	-	-	-	-	-	-	-	-	-	-	-	-																				
T203XD	018	M48Z58	-	-	39KS	10KJ	-	10NJ	220KJ	50KVAR13	4U7F16Z3528	-	-	4021BD	SK16MSMD	-	-	-	-	100NT	FX469LS	0J	-	200UART	SK12MSMD	SK16MSMD	SK12MSMD	SK12MSMD	SK12MSMD	SK12MSMD	3K44OPT	3000OPT	-	-	-	-	-	-	-	-	-	-	-	-	-	-	-	-	-	-																				
T2040D	019	M48Z58	-	-	39KS	10KJ	-	10NJ	220KJ	50KVAR13	4U7F16Z3528	-	-	0J	-	SK6MSMD	0J	MJD2955	-	100NT	FX469LS	0J	-	200UART	-	-	-	-	-	-	-	3K44OPT	3000OPT	-	-	-	-	-	-	-	-	-	-	-	-	-	-	-	-	-																				
T203A	FRENCH01	M48Z58	-	-	39KS	10KJ	150PJ	150PJ	470KJ	50KVAR13	4U7F16Z3528	-	-	4021BD	SK16MSMD	-	-	-	-	100NT	FX469LS	0J	-	200UART	SK12MSMD	SK16MSMD	SK12MSMD	SK12MSMD	SK12MSMD	3K44OPT	3000OPT	-	-	-	-	-	-	-	-	-	-	-	-	-	-	-	-	-	-	-																				
T2040	FRENCH02	M48Z58	-	-	39KS	10KJ	150PJ	150PJ	470KJ	50KVAR13	4U7F16Z3528	-	-	0J	-	SK6MSMD	0J	MJD2955	-	100NT	FX469LS	0J	-	200UART	-	-	-	-	-	-	-	3K44OPT	3000OPT	-	-	-	-	-	-	-	-	-	-	-	-	-	-	-	-																					
T2050	FRENCH03	M48Z35MH1TR	-	-	39KS	10KJ	150PJ	150PJ	470KJ	50KVAR13	4U7F16Z3528	-	-	0J	-	SK6MSMD	0J	MJD2955	-	100NT	FX469LS	0J	-	200UART	-	-	-	-	-	-	3K44OPT	3000OPT	-	-	-	-	-	-	-	-	-	-	-	-	-	-	-	-	-																					

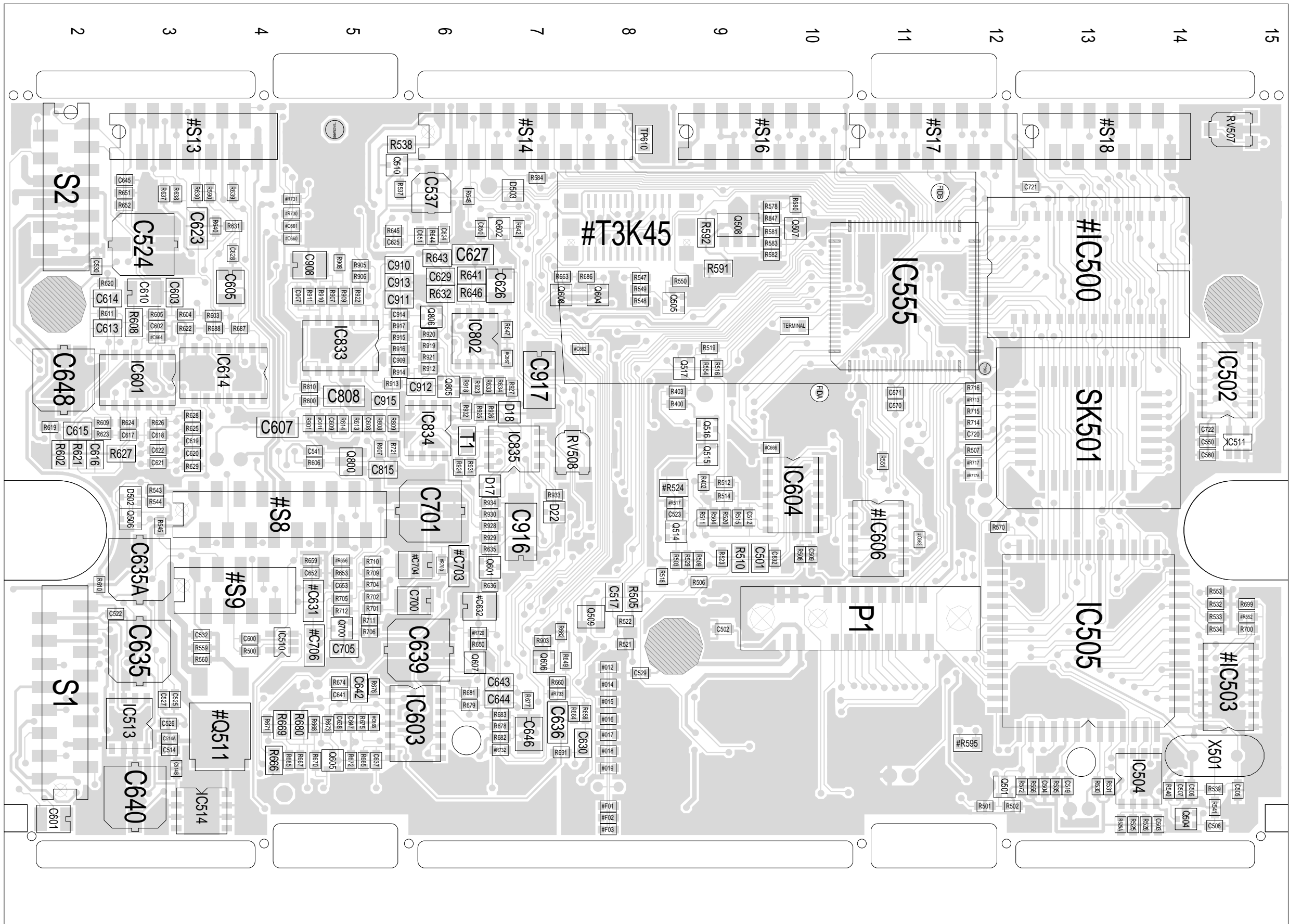


2A	ADD RESISTORS OFF IC35	RPS	24/03/2K
1A	NEW LTR PCB	RPS	24/09/99
REV/ISS	AMENDMENTS	DRAWN	CHKD
		D.O.	APVD
		DATE	

© TAIT ELECTRONICS
 T2000-LTR LOGIC PCB
 CONTROL BOARD

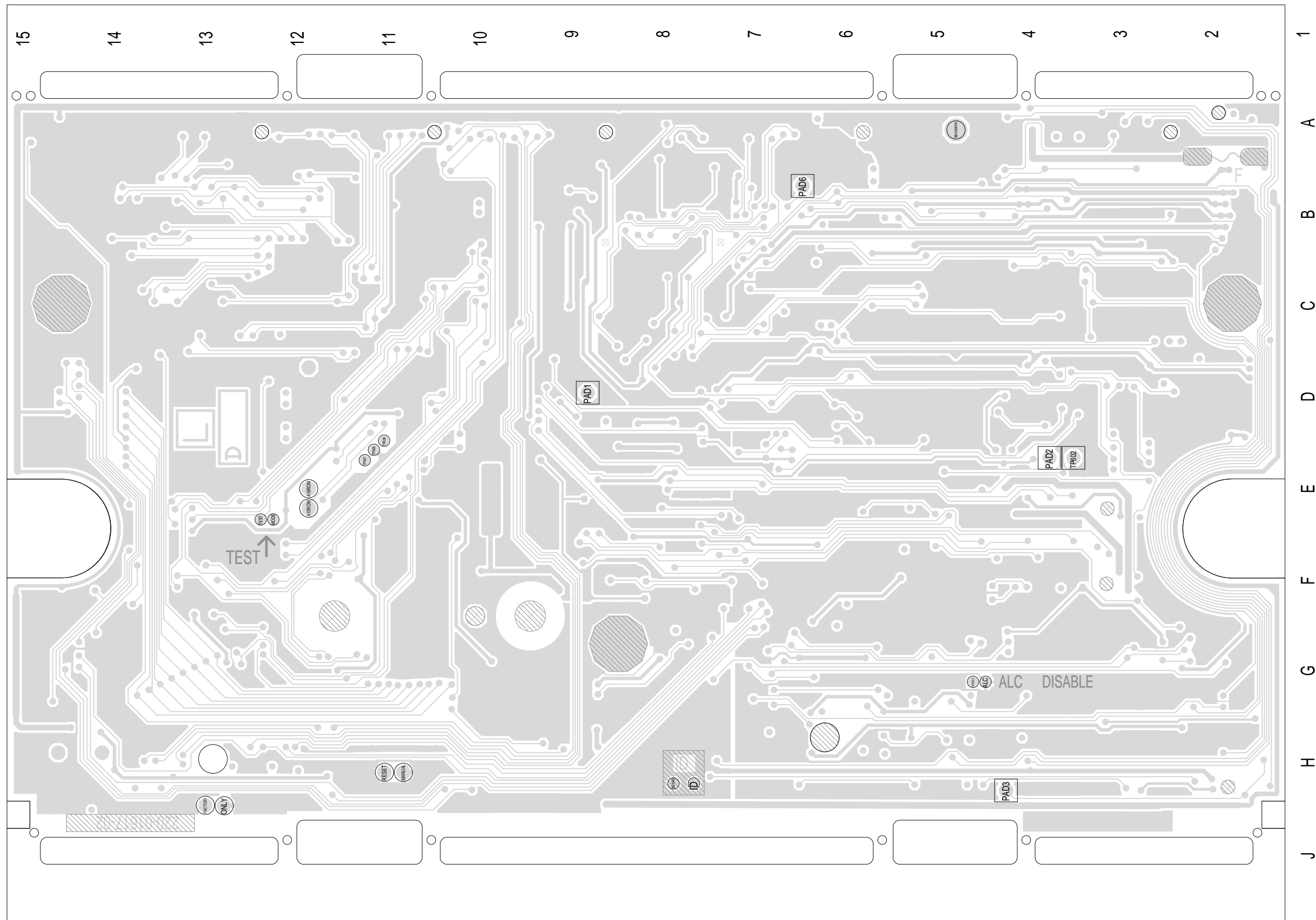
PROJECT: 220-01617-02
 DESIGNER: RPS
 FILE NAME: 161702a
 FILE DATE: 24/03/2K
 NO SHEETS: 2
 SHEET: 2

1 A B C D E F G H J
2
3
4
5
6
7
8
9
10
11
12
13
14
15



TAIT ELECTRONICS IPN: 220-01617-02 ISS: A ID: 1.TA DATE: 24 Mar 2000
LTR LOGIC PCB LAYOUT - TOP SIDE

Scale: 2:3:1 ; Rotation: 270 degrees



TAIT ELECTRONICS	IPN:	ISS:	ID:	DATE:
	220-01617-02	A	2.BA	24 Mar 2000
LTR LOGIC PCB LAYOUT - BOTTOM SIDE				

Scale:2.3:1 ; Rotation: 90 degrees